

P5 Pneumatic Positioner



The foundation of the PMV Valve Control System is the PMV P5 pneumatic positioner. Performance of this unit has been enhanced with the special high gain/high capacity spool valve assembly providing very quick and accurate actuator/valve response. For single or double acting application, this new modular design allows for the simple addition of I/P converters and/or a feedback unit with a variety of feedback options.

Other features include:

Gauge ports, stainless steel cam with a simple cam locking device, tapped exhaust port for venting of supply media, external zero adjustment, and completely sealed cover.



Sturdy, simple, reliable design.

High gain pilot valve.

Bright visible indicator.

Stainless steel cam.

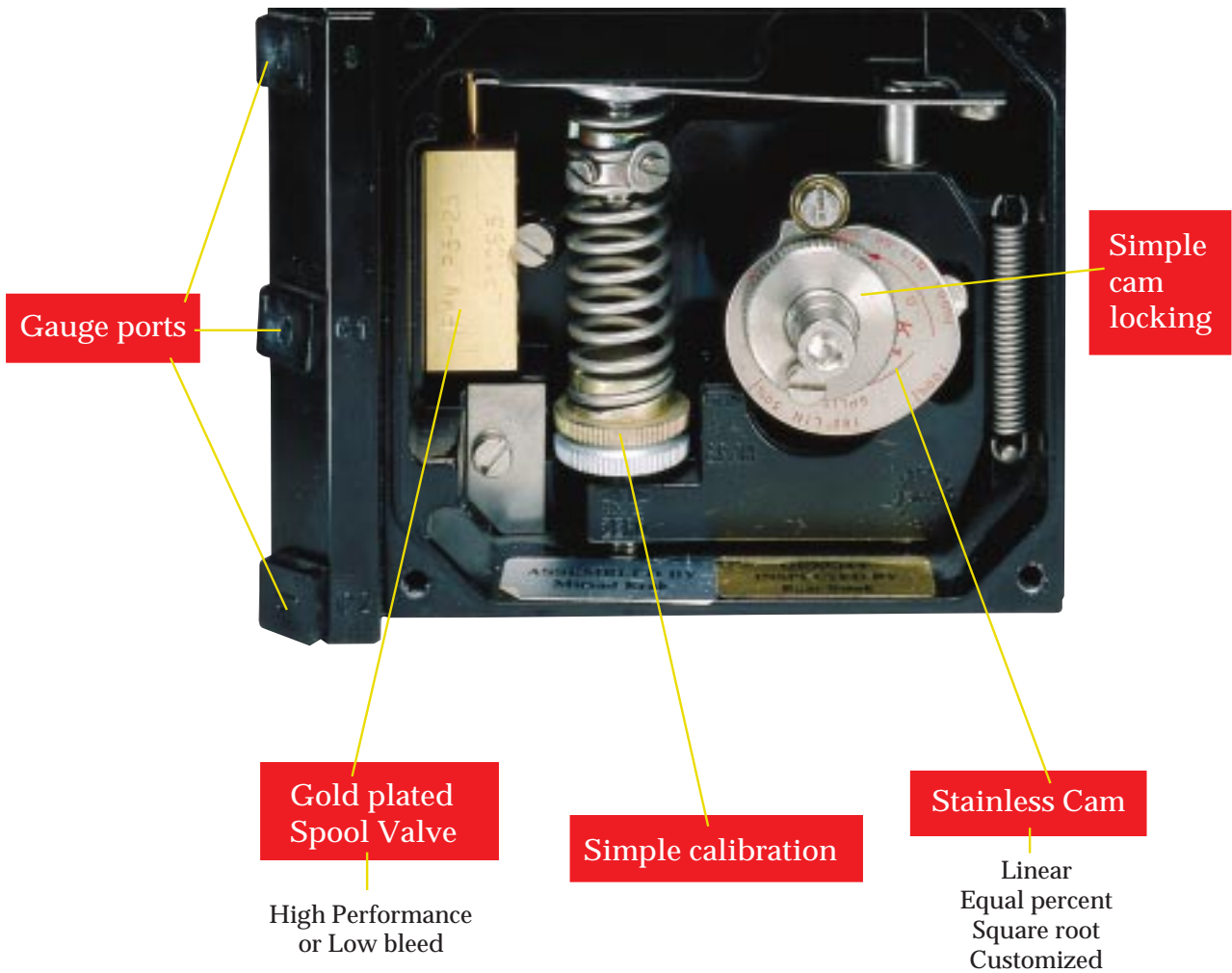
Tapped exhaust port.

Easy to add on I/P converter and Feedback Unit, F5.

Simple calibration, external zero adjustment.

Built in gauge ports.

Simple



Modular

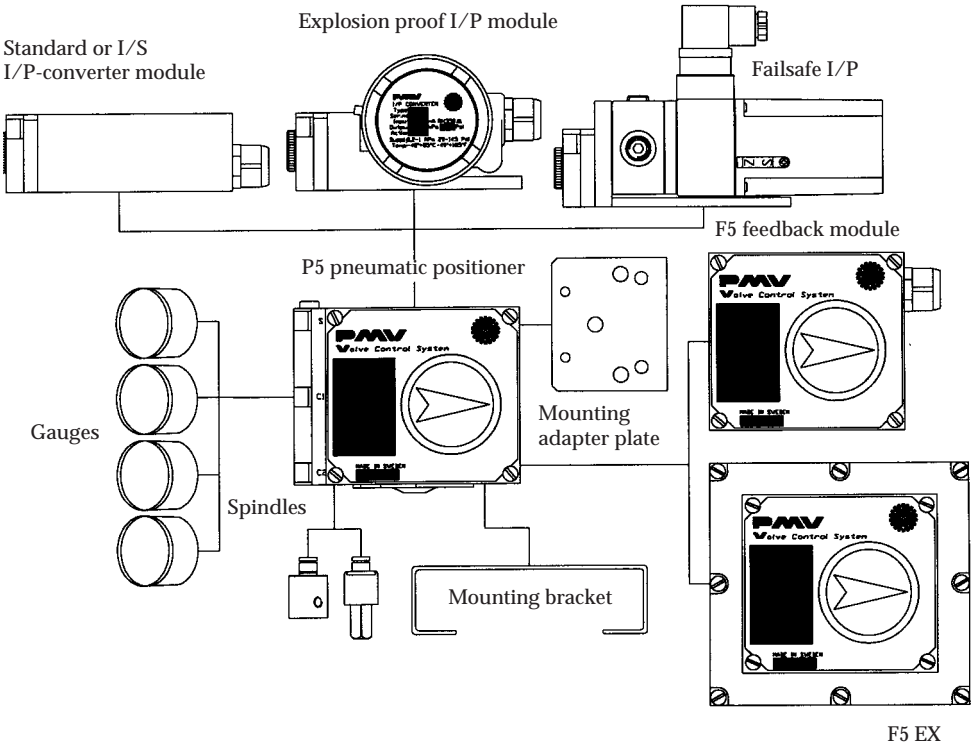


Simple to add on:

Feedback Unit

Dome Style Indicator

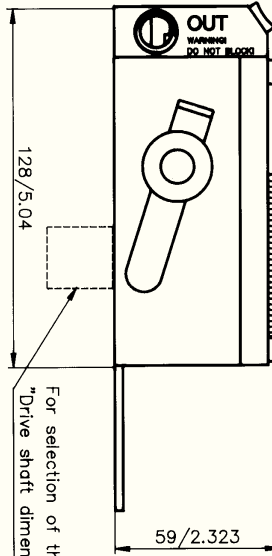
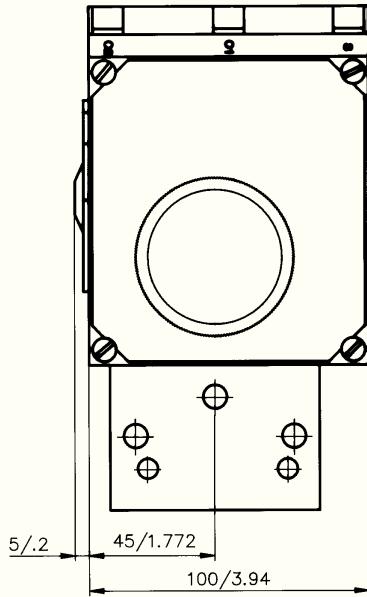
I/P Converter



Technical Specifications

Input signal	20-100kPa/3-15 Psi (6-30 Psi option)	
Linearity	≤0,5%*	
Hysteresis	≤0,5%*	
Repeatability	≤0,5%*	
Gain factor at: 600 KPa/87 Psi	Min. 1000 kPa/kPa Min. 66%/ % ISA S75.13-1989	Low Bleed Version Min: 450 KPa/KPa Min: 30 %/ %
Max. air consumption at supply pressure:		
0,2 MPa/29 Psi	5,4 nl/min (0,19 SCFM)	2,7 nl/min (0,1 SCFM)
0,4 MPa/58 Psi	12,3 nl/min (0,43 SCFM)	6,1 nl/min (0,21 SCFM)
0,6 MPa/87 Psi	20 nl/min (0,71 SCFM)	9.9 nl/min (0,35 SCFM)
0,8 MPa/116 Psi	27,8 nl/min (0,98 SCFM)	13,7 nl/min (0,48 SCFM)
1 MPa/145 Psi	35,7 nl/min (1,26 SCFM)	17,5 nl/min (0,62 SCFM)
Min. air delivery at supply pressure:		
0,2 MPa/29 Psi	200 nl/min (6,9 SCFM)	156 nl/min (0,62 SCFM)
0,4 MPa/58 Psi	370 nl/min (12,8 SCFM)	288 nl/min (0,62 SCFM)
0,6 MPa/87 Psi	540 nl/min (18,8 SCFM)	421 nl/min (0,62 SCFM)
0,8 MPa/116 Psi	710 nl/min (24,7 SCFM)	553 nl/min (0,62 SCFM)
1 MPa/145 Psi	880 nl/min (30,6 SCFM)	686 nl/min (0,62 SCFM)
Supply pressure	Max 1 MPa/150 Psi	
Temperature range	-20°C to +85°C/(-4°F to 185°F)	
Connector threads	1/4" NPT or G (BSP)	
Gauge threads	1/8" NPT or G (BSP)	
Weight	1,1 kg/2,4 lbs	
Housing	Die cast Aluminum	
Surface treatment	ED Epoxy paint, black	
Fasteners	A2/A4 Stainless	
Ingress protection	IP66 /NEMA 4	

Dimensional Drawing



For selection of the feedback-spindle pls see
"Drive shaft dimension drawing" PMV P/N 12184.

