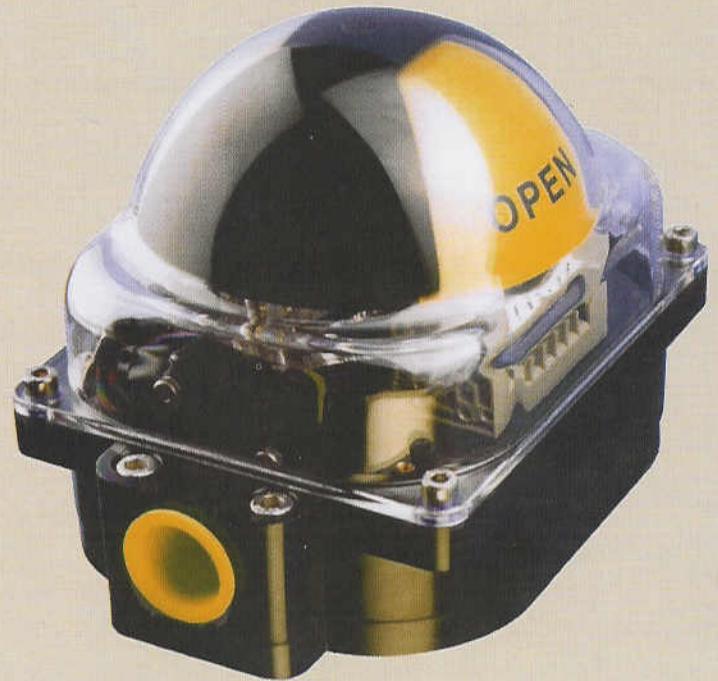


NEW ANTI CORROSIVE CV 3 Switchbox

weatherproof to IP67.

- IP67 weatherproof enclosure.
- Polycarbonate construction.
- 2 x Conduit entries (available in several thread options).
- Stainless steel fasteners.
- Captive lid screws.
- Mounting details to European standards.
- Separate base plate provides mounting versatility.
- Transparent lid permits inspection of switch operation and terminal connections without removing the lid.
- Button cam design provides accurate reliable switching.

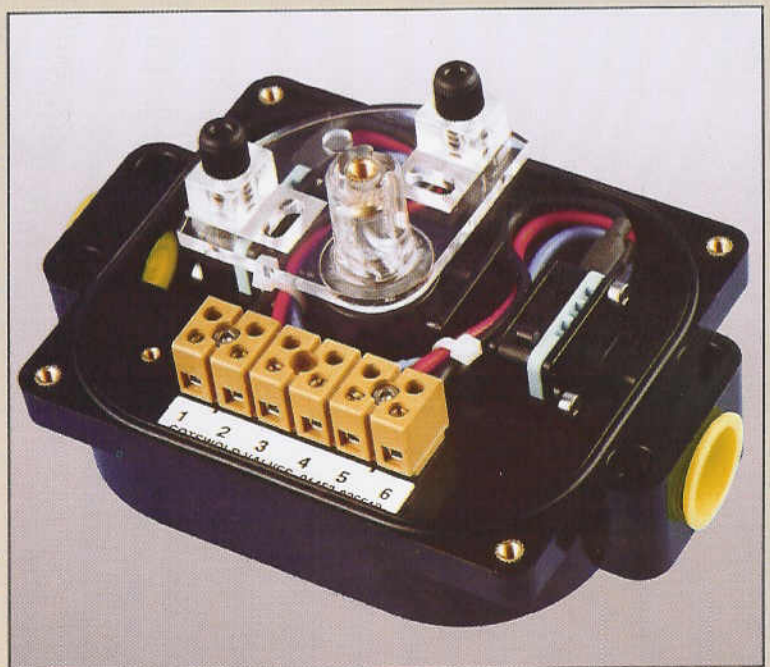


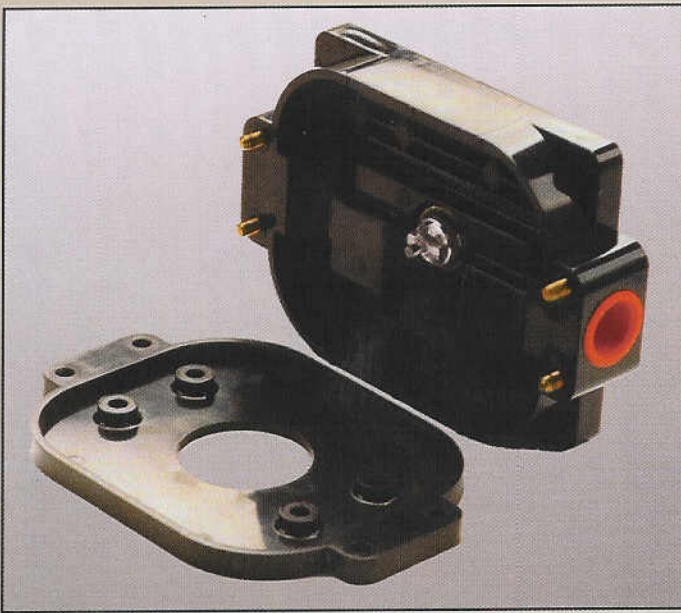
The CV3 Switchbox sets new standards in valve monitoring the unique design of the switchbox enables rapid fitting and setting, while the domed indicator gives the highest possible standard of visual position indication from virtually any angle.

Total Accessibility

With the lid removed switch adjustment and the terminal block access is unhindered.

- 2 x V3 10 amp switches (4 optional)
- V3 Format proximity/reed switches optional
- Rapid "fingertip" switch setting (no tools required)
- Dual indicator dome mounting ensures correct read-out is given with the actuator mounting in line or across the line.





The CV3 design permits mounting direct to the actuator or elevated from the actuator if preferred, the mounting is to the current European Standards. The separate base plate provides versatility enabling the CV3 to be fitted to a wide range of actuators.

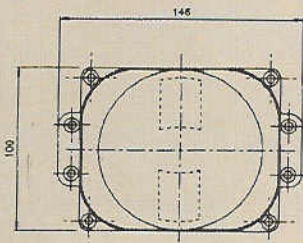
With the base plate fitted to the actuator the switchbox is mounted to it using fixing bolts which are outside the weatherproof enclosure thereby significantly reducing the possibility of water ingress from damaged or omitted seals.

A benefit of the CV3 mounting design is that it permits the switchbox to be removed from the actuator without opening the electrical enclosure. As the design dictates one possible fitting location it is impossible to refit the CV3 incorrectly following valve / actuator maintenance.



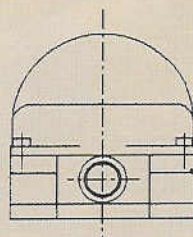
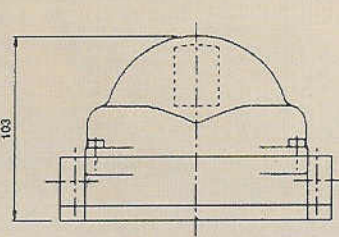
The CV3 is designed to suit 90° pneumatic actuators, a modified version of the CV3 is available for 180° operation.

Overall dimensions



Materials of Construction

Enclosure	Lexan® 121	Properties of Lexan® 121
Indicator	Lexan® 121	Temperature Rating 115°C
Interface Plate	Lexan® 121	Tensile strength > 60 N/mm ²
O rings	Nitrile	
Cams	Nylon 6	
Fasteners	Stainless Steel	



Supplied by

CeeVee Ltd

Units E7 & E8
Inchbrook Trading Estate,
Woodchester,
Stroud,
Glos.
GL5 5EY
Tel 01453 833148
info@cee-vee.co.uk