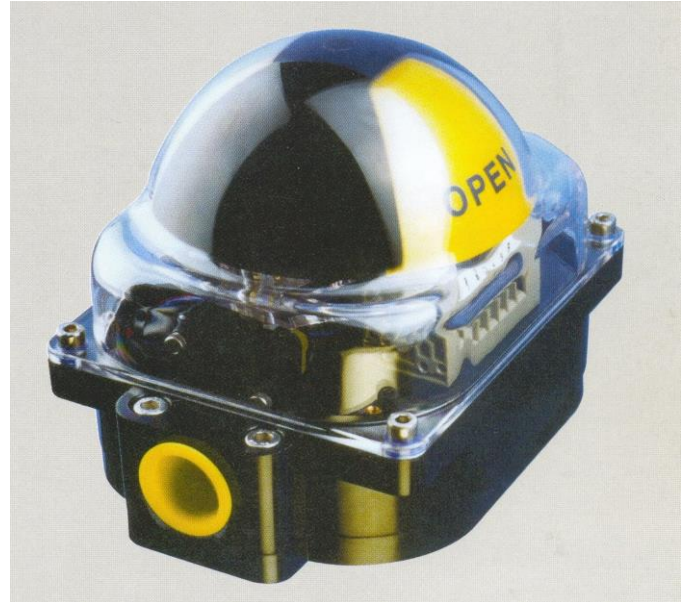


CV3 Switchbox

Weatherproof Enclosure Rated to IP67

- Weatherproof Enclosure IP67 rated
- Polycarbonate Construction
- 2 x Conduit Entries M20 or Pg13.5
- Stainless steel Fasteners
- Direct mount to Namur standard pneumatic Actuators.
- Visual Indicator
- Simple and quick wiring thanks to the accessible terminal block



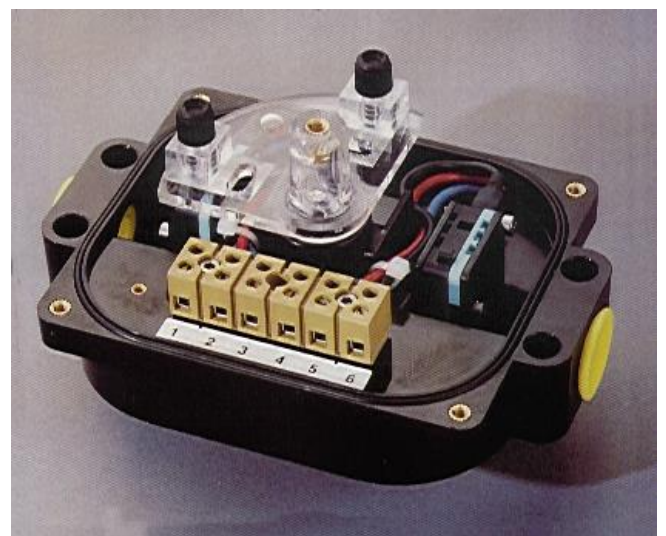
Total Accessibility:

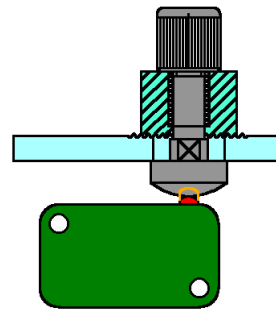
With the lid removed switch adjustment and terminal block access is unhindered

Switch/ Sensor Options

Up to 4 switches or sensors in one housing

- V3 mechanical micro switches with silver-nickel or gold alloy contacts
- Intrinsically safe proximity sensors (e.g. Pepperl & Fuchs NJ2-V3-N)
- 3-wire proximity sensors (e.g. Pepperl & Fuchs NBB2-V3-E2)





- The "OPEN" and "CLOSED" positions can be set individually and easily using the button cam
- Simple mounting to standard actuators.

The hemispherical visual indicator enables the valve position to be seen from almost any direction.

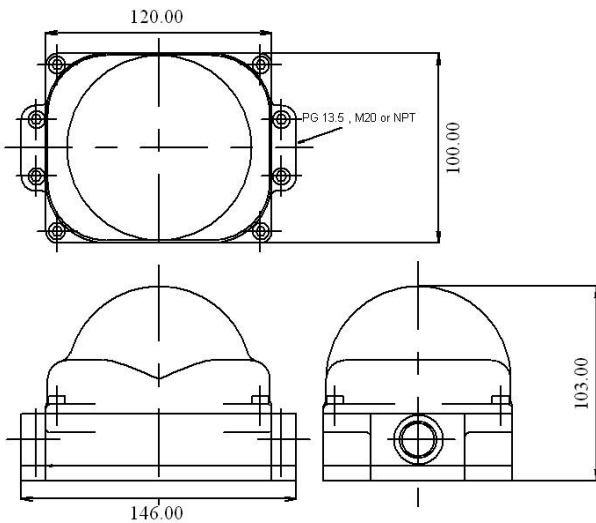
Materials of Construction

Enclosure : Black Polycarbonate

Clear Lid : Transparent Polycarbonate

O- Rings : NBR

Fasteners : Stainless Steel



CeeVee Ltd.

**Units E7 & E8
Inchbrook Trading Estate
Woodchester, Stroud
Gloucestershire
GL5 5EY
U.K**

**Tel. +44(0)1453 833148
www.cee-vee.co.uk
info@cee-vee.co.uk**